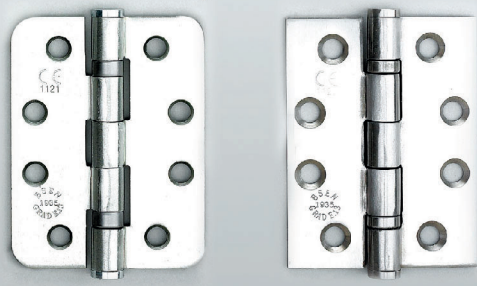


HINGES

BALL BEARING HINGES

RADIUS CORNERED HINGES

All sizes available by order



- ▶ Ball bearing hinge
- ▶ Exceed BSEN 1935 grade 13 suitable for doors up to 120kg (Weight based on 3 hinges per door leaf)
- ▶ Fire tested to EN 1634-1
- ▶ Radiused and square corner versions
- ▶ Stainless steel versions are Grade 304
- ▶ Supplied with 32mm X No.10 pozidrive stainless steel wood screws
- ▶ Security stud option
- ▶ Hinge variations to order
- ▶ Hospital TIP - Add suffix 'H'
- ▶ Non Removable PIN - Add suffix 'NRP'
- ▶ Final I Ball TIP Hinges - Add suffix 'FT' or 'BT'
- ▶ Metal Screws - Add suffix 'M'
- ▶ Wooden Screws - Add suffix 'W'

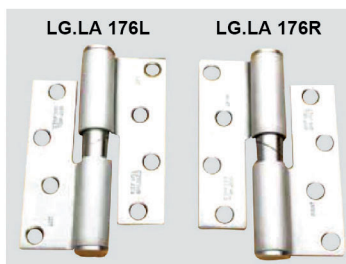
Square Cornered Hinges

LG Code	Size HXW
LG.LA150.076	76 X 50 X 2MM
LG.LA150W.076	76 X 50 X 2MM
LG.LA160W.102	102 X 76 X 2MM
LG.LA160C.102	102 X 76 X 3MM
LG.LA160.102B	102 X 76 X 2.5MM
LG.LA160S.102	102 X 76 X 3MM
LG.LA160H.102	102 X 76 X 3MM
LG.LA160.102	102 X 76 X 3MM
LG.LA166.102	102 X 89 X 3MM
LG.LA161.102	102 X 102 X 3MM
LG.LA167.114	114 X 102 X 3MM
LG.LA167.114B	114 X 114 X 3MM
LG.LA168.114	114 X 102 X 3MM
LG.LA168.114B	114 X 114 X 3.5MM
LG.LA178.127	127 X 76 X 3MM
LG.LA178.089	127 X 89 X 3MM
LG.LA178.102	127 X 102 X 3MM

Radius Cornered Hinges

LG Code	Size HXW
LG.LA150.076R	76 X 50 X 2MM
LG.LA150W.076R	76 X 50 X 2MM
LG.LA160W.102R	102 X 76 X 2MM
LG.LA160C.102R	102 X 76 X 3MM
LG.LA160.102BR	102 X 76 X 2.5MM
LG.LA160S.102R	102 X 76 X 3MM
LG.LA160H.102R	102 X 76 X 3MM
LG.LA160.102R	102 X 76 X 3MM
LG.LA166.102R	102 X 89 X 3MM
LG.LA161.102R	102 X 102 X 3MM
LG.LA167.114R	114 X 102 X 3MM
LG.LA167.114BR	114 X 114 X 3MM
LG.LA168.114R	114 X 102 X 3MM
LG.LA168.114BR	114 X 114 X 3.5MM
LG.LA178.127R	127 X 76 X 3MM
LG.LA178.089R	127 X 89 X 3MM
LG.LA178.102R	127 X 102 X 3MM

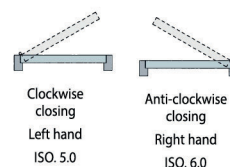
NON-FIRE DOOR APPLICATIONS



- ▶ Rising butt hinges suitable for light internal doors, providing a soft 'self closing' action
- ▶ Must be specified as Clockwise Closing (CW) or Anti-Clockwise Closing (ACW)
- ▶ Stainless steel versions are Grade 304
- ▶ Supplied with 32mm x No.10 pozidrive zinc plated wood screws
- ▶ Maximum adjusted door weight 60kg
- ▶ 2 hinges per leaf recommended
- ▶ Require regular maintenance

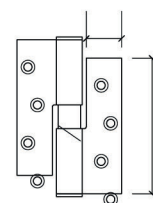
Rising butt hinges

Item no.	Handing	Finishes		Unit
		SS		
LG.LA 176L.102.01.153	LH	•		single
LG.LA 176R.102.01.153	RH	•		single



Lift Off hinge

Item no.	size(mm)	Finishes			Unit
		SS	Ps		
LG.LA.177L.102.01.153 LH	102 x 76 x 3mm	•	•		single
LG.LA.177R.102.01.153 RH	102 x 76 x 3mm	•	•		single
LG.LA.177L.102R.01.153 LH Radiused Corner	102 x 76 x 3mm	•	•		single
LG.LA.177R.102R.01.153 RH Radiused Corner	102 x 76 x 3mm	•	•		single

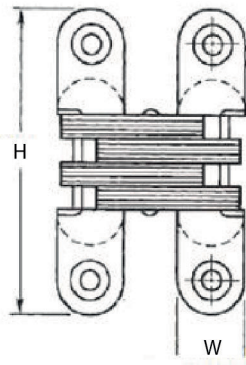


*Available to order - Lift Off Hinge sizes : 102 x 89 x 3mm, 102 x 102 x 3mm

FIRE DOOR APPLICATIONS

- ▶ When used on fire doors, intumescent packs need to be specified ITH - Specify hinge size upon ordering
- ▶ For 30 min. fire door applications specify 1 mm material
- ▶ For FD60 & FD90 specify 2mm intumescent packs

CONCEALED HINGES

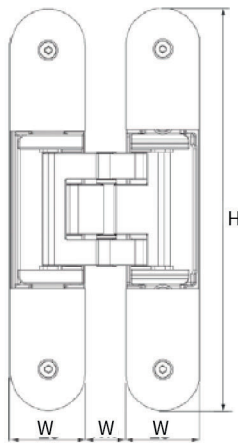
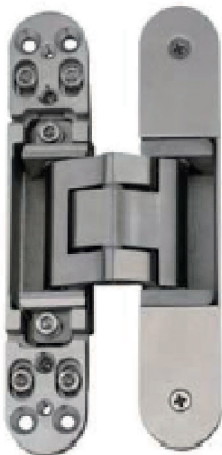


LG.LA192

- ▶ Concealed hinge with 2D adjustment
- ▶ Size : 45mm X 13mm
- ▶ Suitable up to 10kg door weight (2 hinges)
- ▶ Suitable for non fire rated doors
- ▶ Satin Nickel Plated finish

Concealed Hinges 2D Adjustment

LG Code	Size HXW	Weight Capacity
LG.LA192.4513.04.150	45 X 13MM	2 HINGES - 10 KG
LG.LA192.6013.04.150	60 X 13MM	2 HINGES - 15 KG
LG.LA192.7016.04.150	70 X 16MM	2 HINGES - 20 KG
LG.LA192.9519.04.150	95 X 19MM	2 HINGES - 30 KG
LG.LA192.11825.04.150	118 X 25MM	2 HINGES - 40 KG
LG.LA192.11828.04.150	118 X 28MM	2 HINGES - 50 KG
LG.LA192.13834.04.150	138.5 X 34MM	2 HINGES - 60 KG
LG.LA192.9519.01.153	95 X 19MM	2 HINGES - 30 KG
LG.LA192.11825.01.153	118 X 25MM	2 HINGES - 40 KG
LG.LA192.11828.01.153	118 X 28MM	2 HINGES - 50 KG
LG.LA192.13834.01.153	138.5 X 34MM	2 HINGES - 60 KG

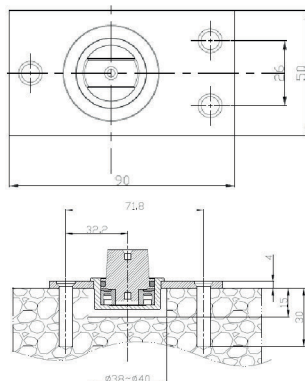
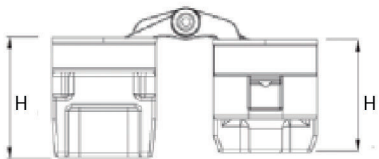


LG.LA193

- ▶ Concealed hinge with 3D adjustment
- ▶ Size : 110mm X 24mm X 29/25mm
- ▶ Suitable up to 40kg door weight (2 hinges)
- ▶ Suitable for non fire rated doors
- ▶ Satin Nickel Plated finish

Concealed Hinges 3D Adjustment

LG Code	Size HXW	Weight Capacity
LG.LA193.1124.04.150	110 X 24 X 29/25MM	2 HINGES - 40 KG
LG.LA193.1130.04.150	140 X 30 X 25/25MM	2 HINGES - 60 KG
LG.LA193.1628.04.150	160 X 28 X 31/34MM	2 HINGES - 80 KG
LG.LA193.2032.04.150	200 X 32 X 36/36MM	2 HINGES - 120 KG
LG.LA193.2432A.04.150	240 X 32 X 42/44MM	2 HINGES - 160 KG
LG.LA193.2432B.04.150	240 X 32 X 36/36MM	2 HINGES - 200 KG
LG.LA193.1628.01.153	160 X 28 X 33/33MM	2 HINGES - 120 KG
LG.LA193.1946.01.153	190 X 46 X 47/47MM	2 HINGES - 200 KG
LG.LA193.2350.01.153	230 X 50 X 49/49MM	2 HINGES - 300 KG
LG.LA193.1025.04.150	100 X 25 X 20/20MM	2 HINGES - 40 KG



LG.LA902

HEAVY DUTY PIVOT

- ▶ Floor mounted
- ▶ Size: 90mm X 50mm X 4mm
- ▶ Suitable up to 250kg door weight
- ▶ Stainless Steel Grade 304, Satin finish
- ▶ Supplied with Tox and screws for concrete fixing